

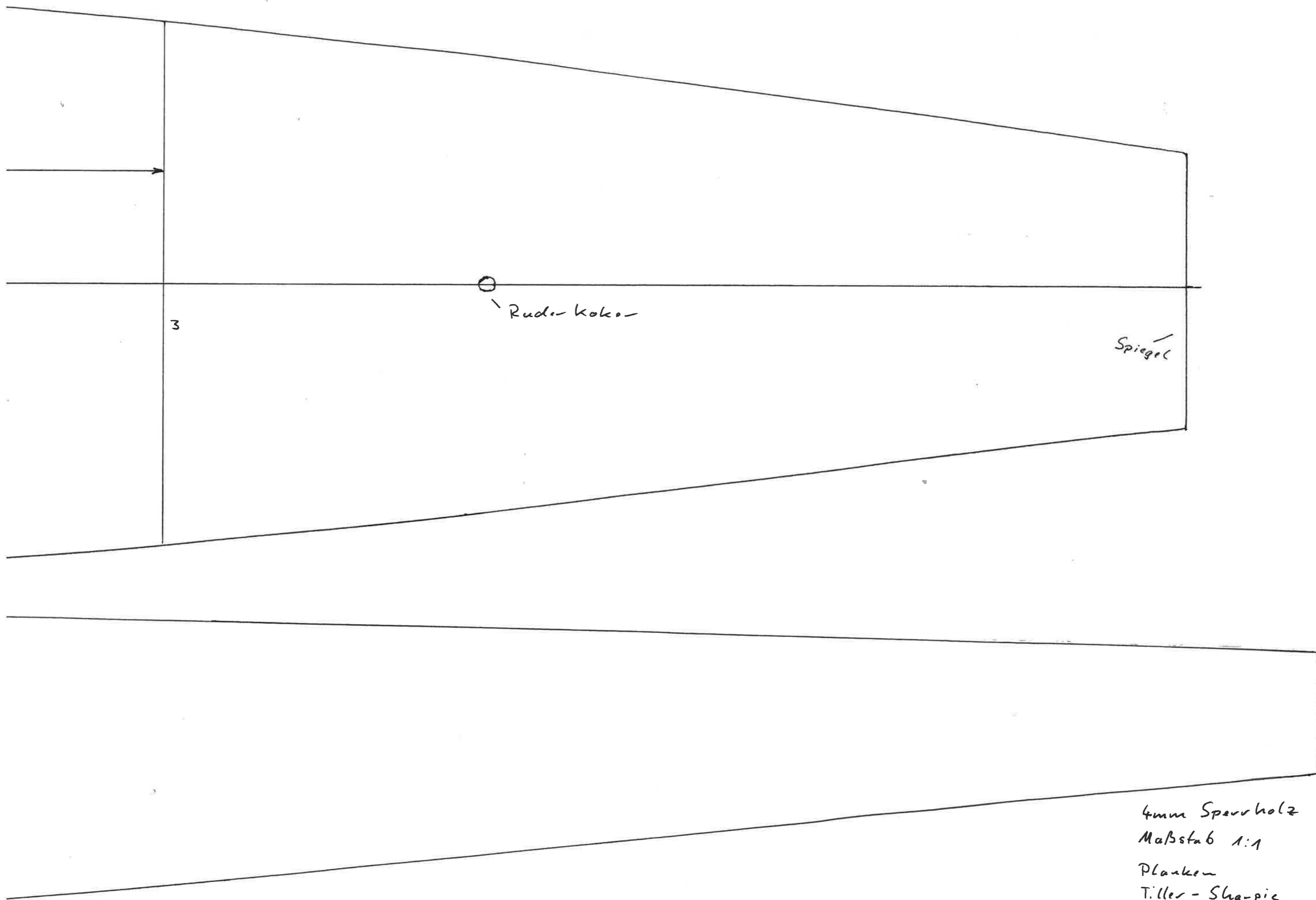
TILLER- SCHARPIE

ein Modell nach "Originalplänen von Arthur Tiller

*Spantenriß von Arthur Tiller aus dem Buch Modell yachtbau
und Segeln, 1922*

Modellkonstruktion, Lateral- und Segelplan von Klaus Bartholomä 2017

*gewidmet Arthur Tiller, einem großartigen Yachtkonstrukteur
... und Modellbauer*



3

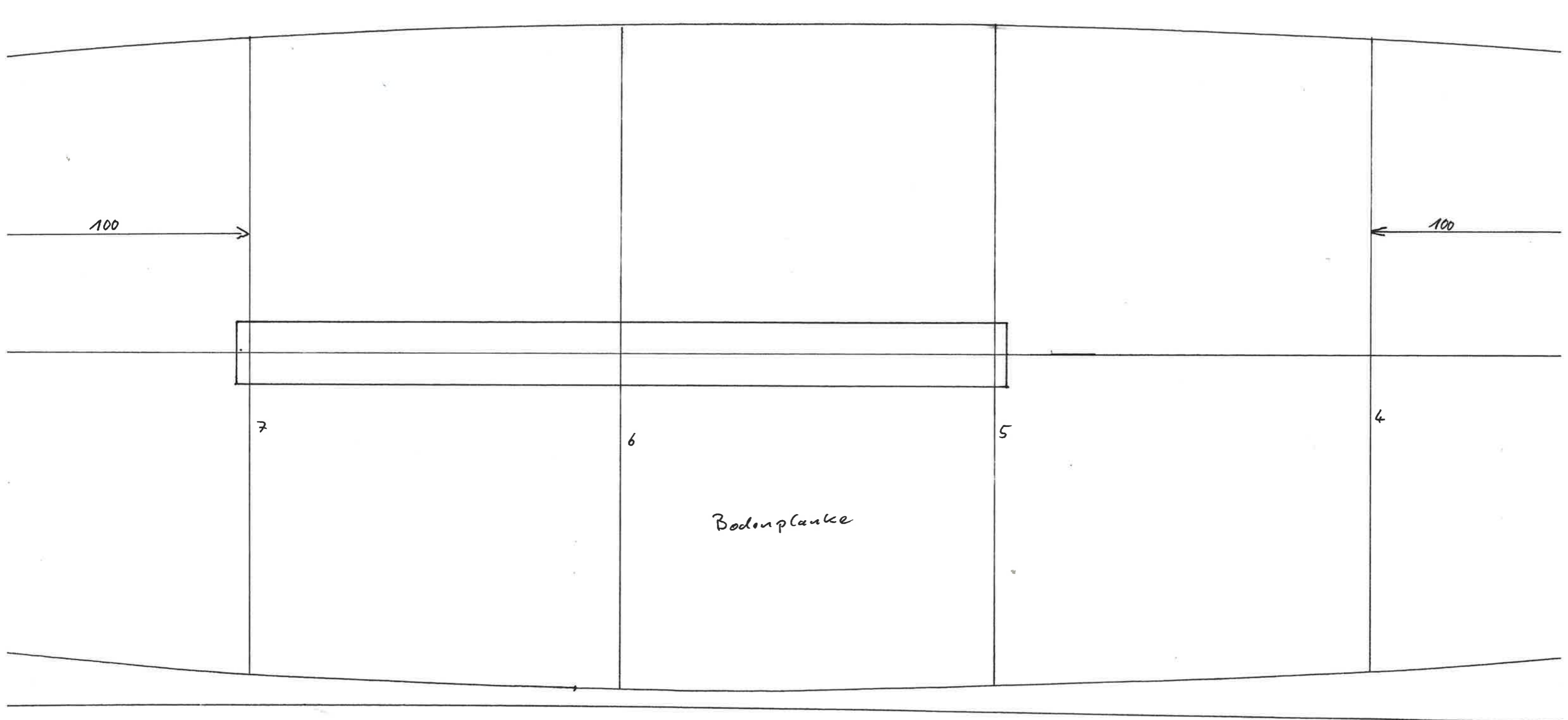
○ Ruder-Koker

Spiegel

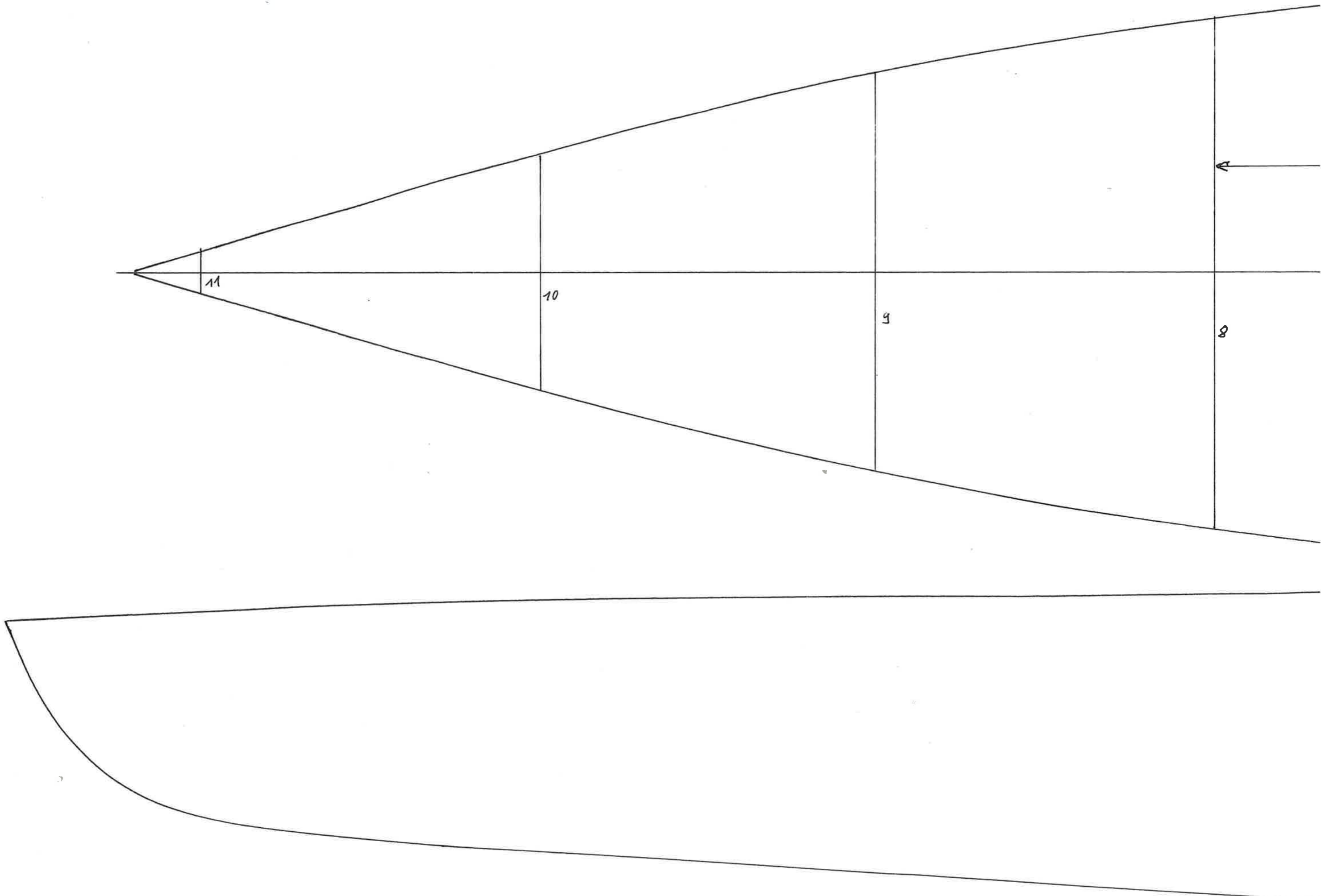
Teil 1

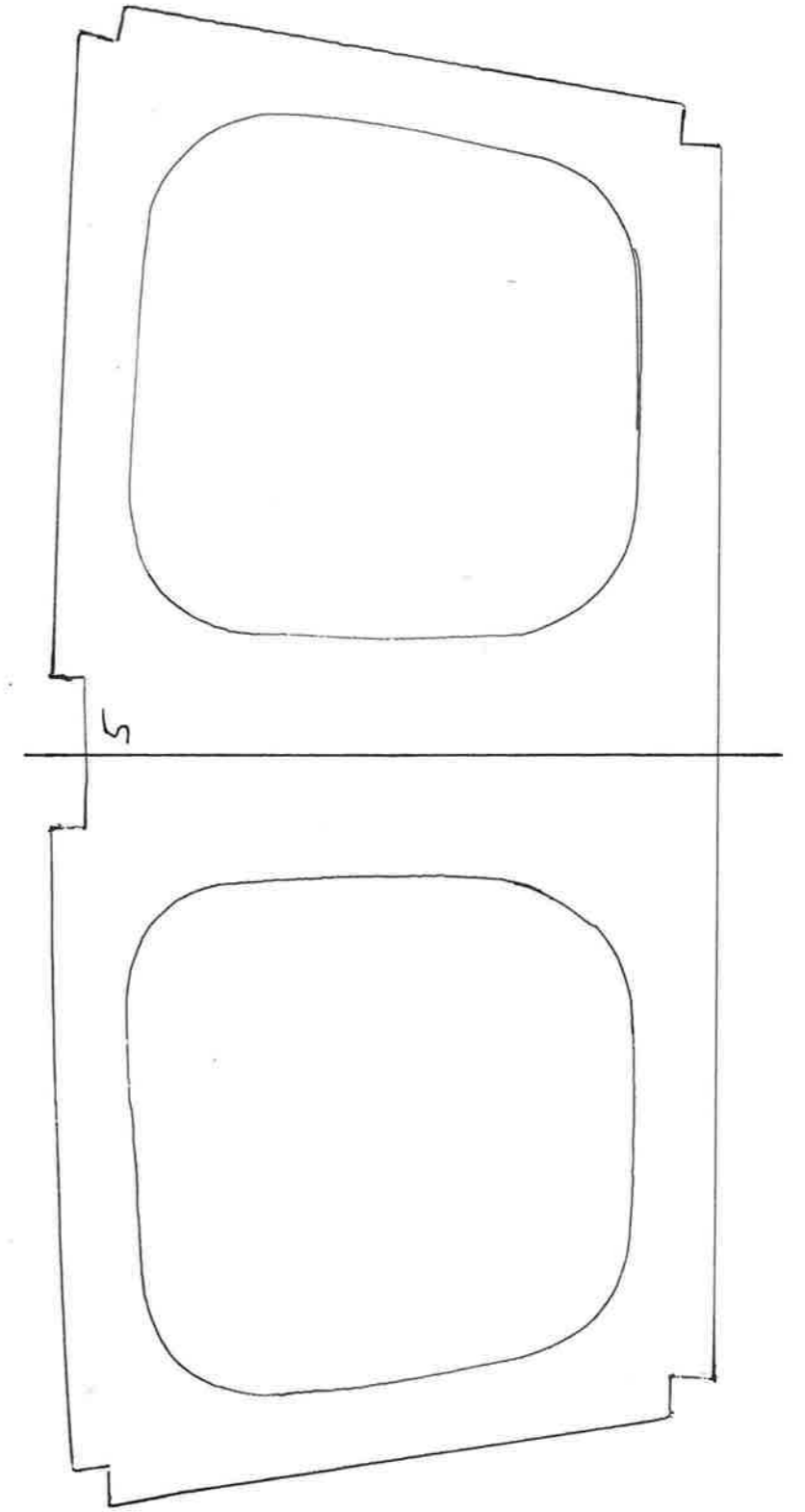
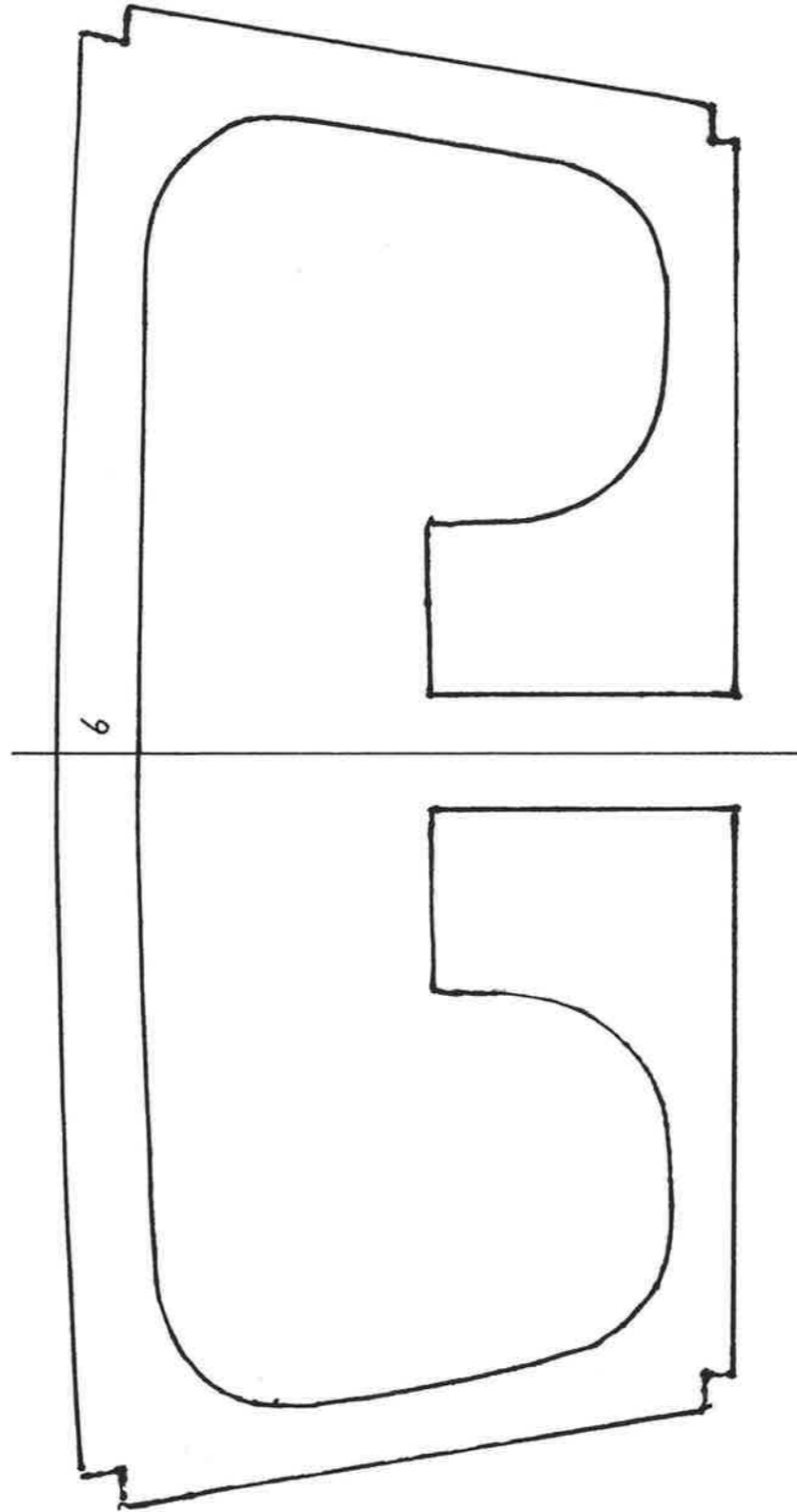
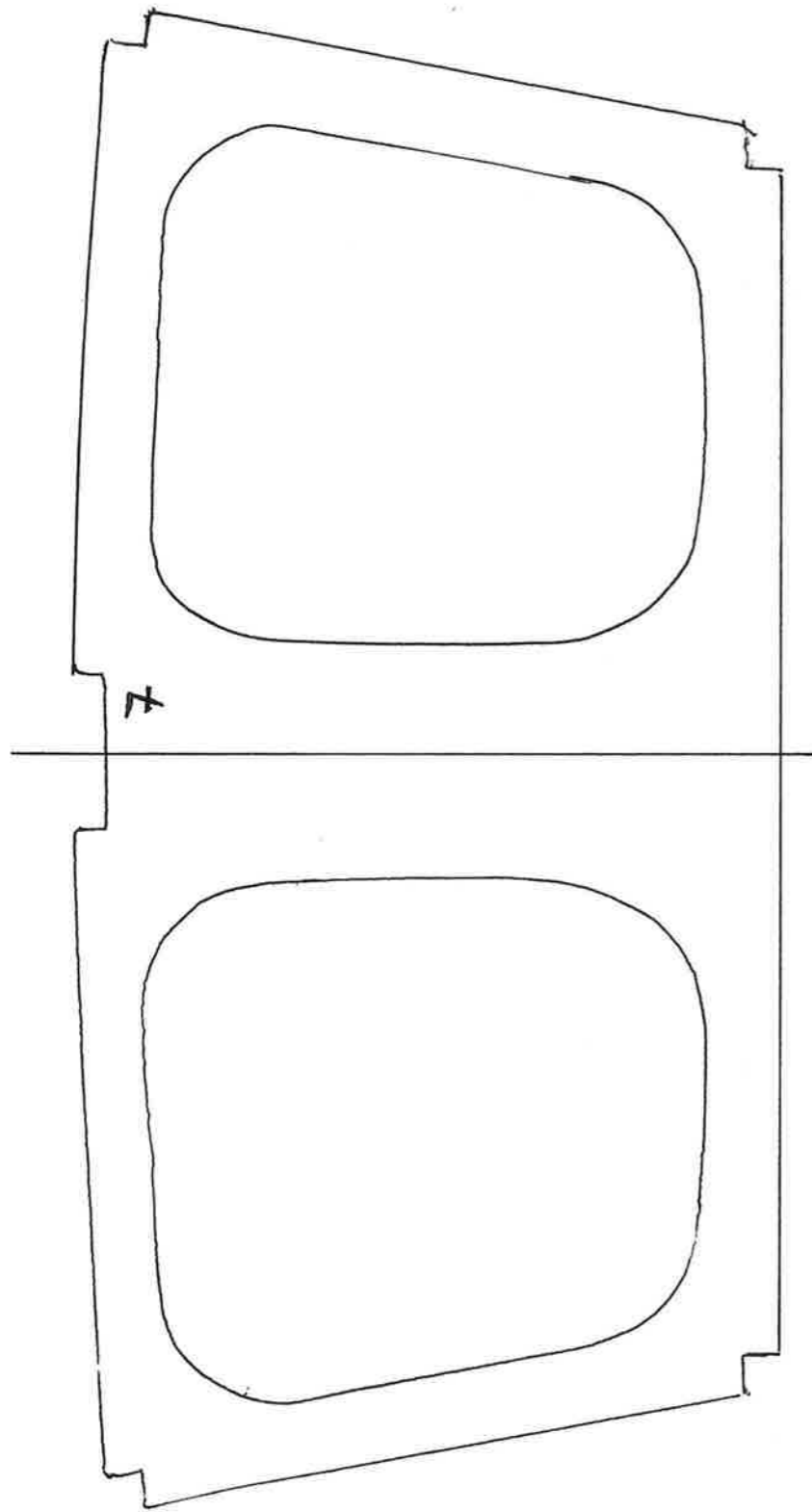
4mm Sperrholz
Maßstab 1:1
Planken
Tiller - Sharpie
von K. Bartholomä 2017

①

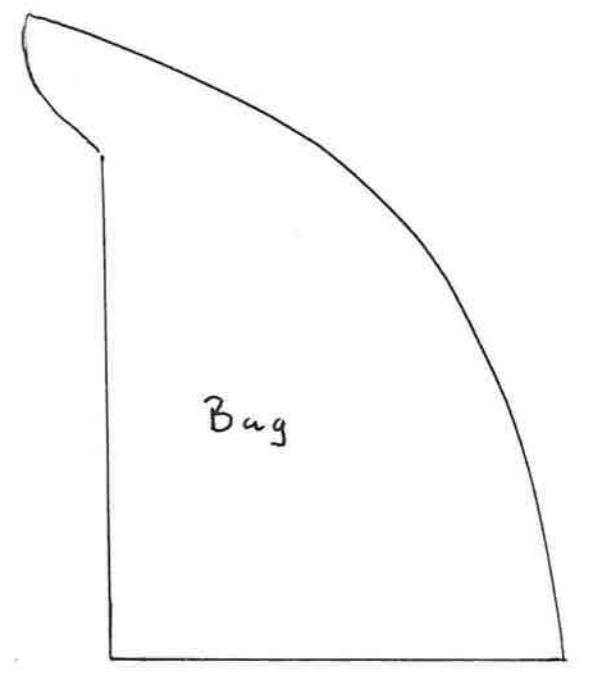
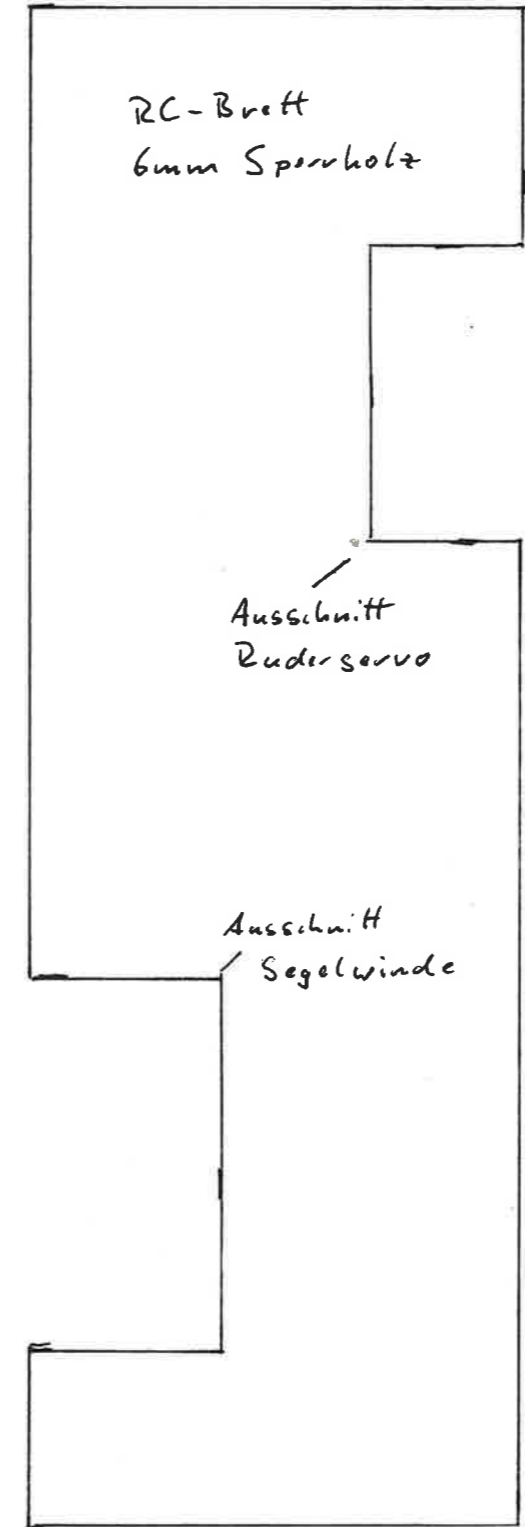
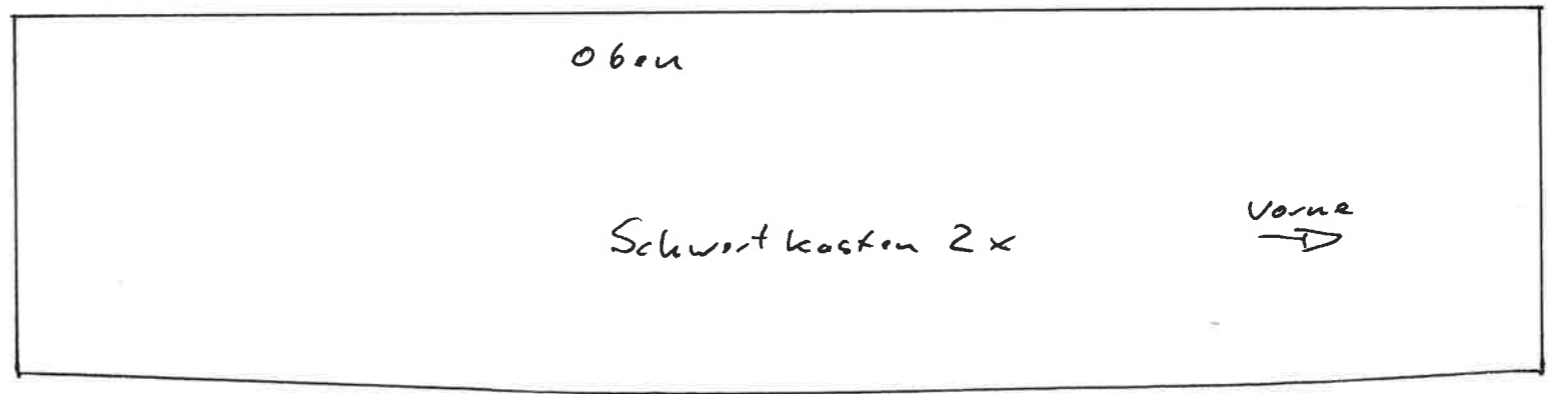
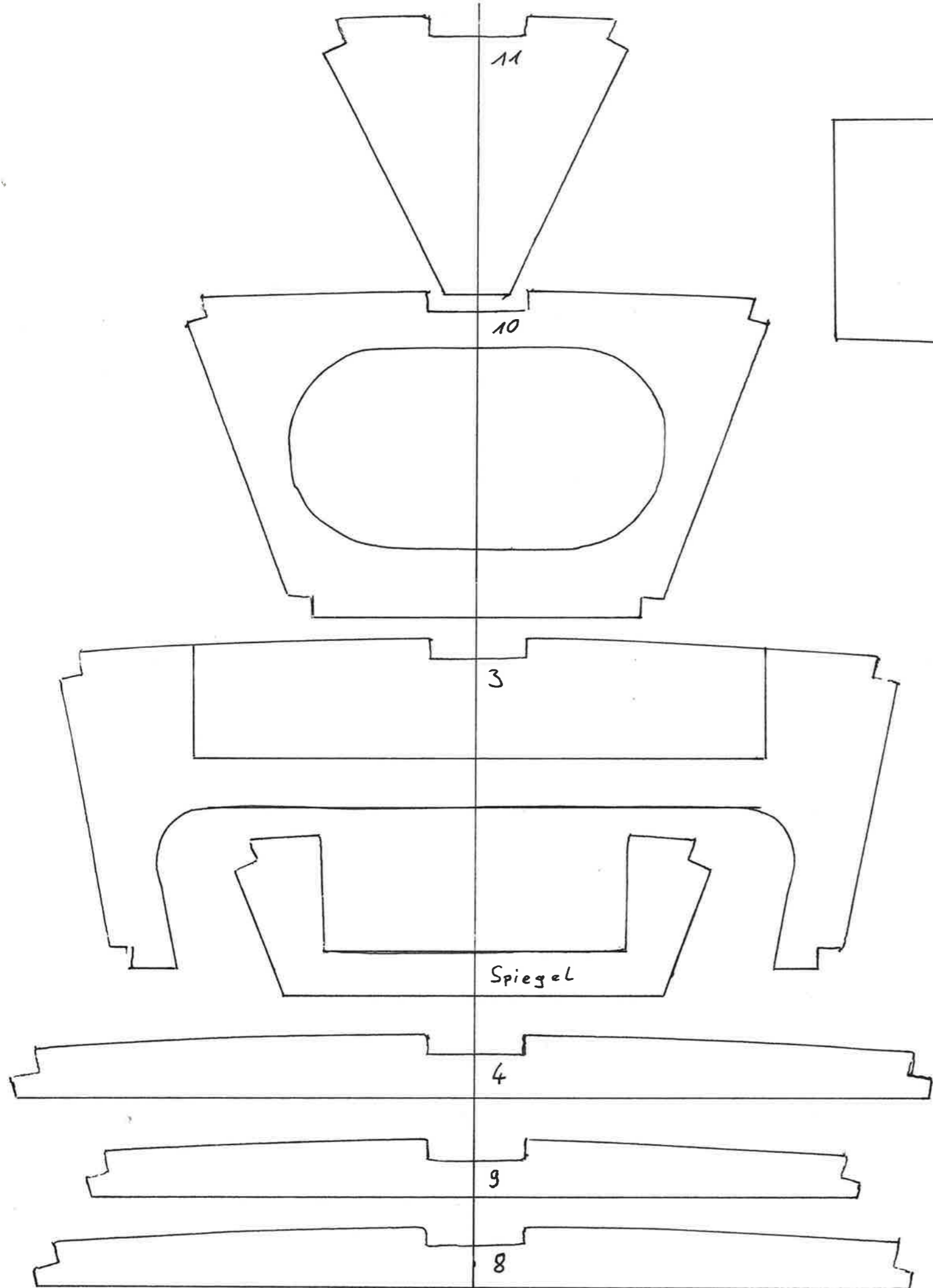


Seitenplatte 2x

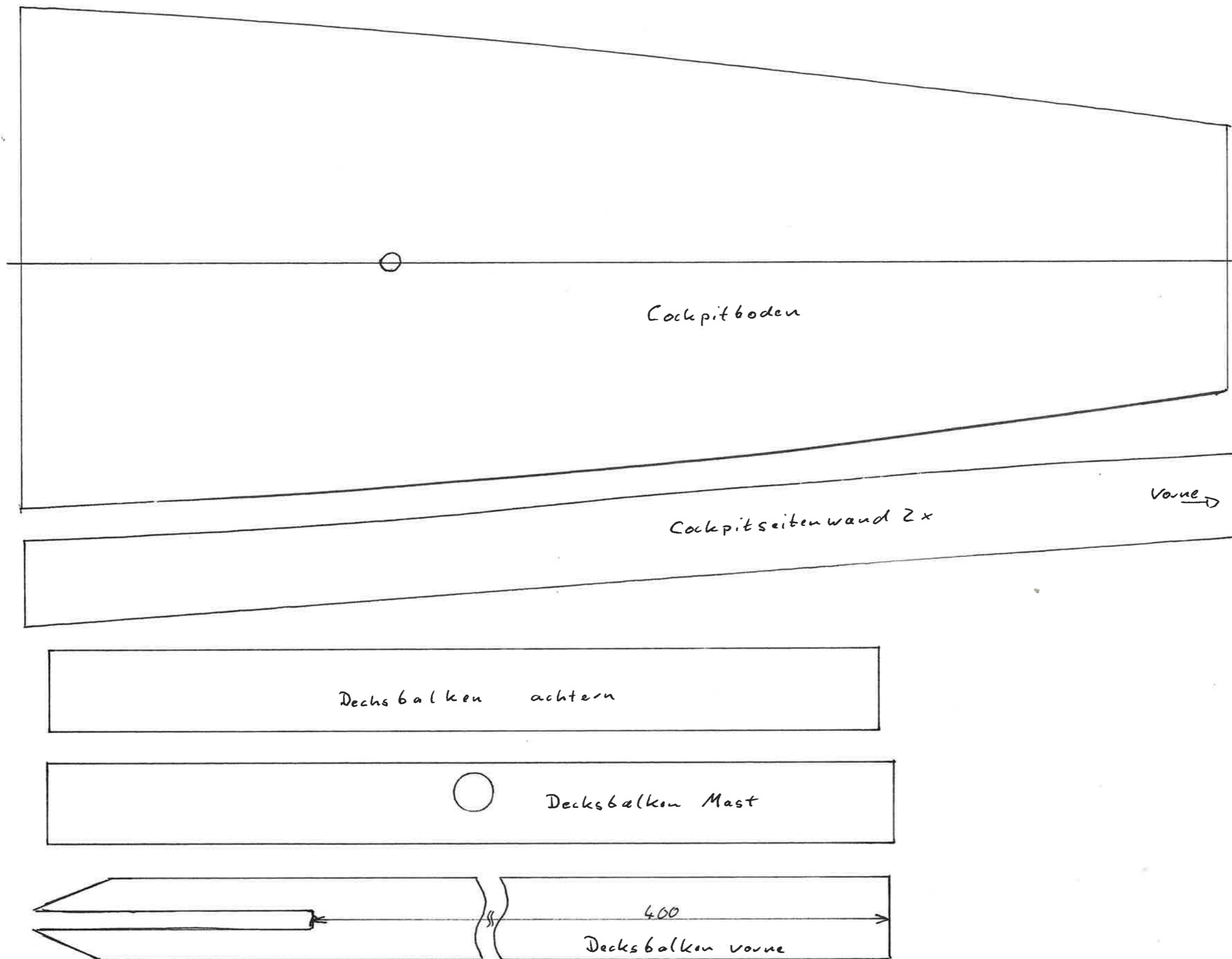




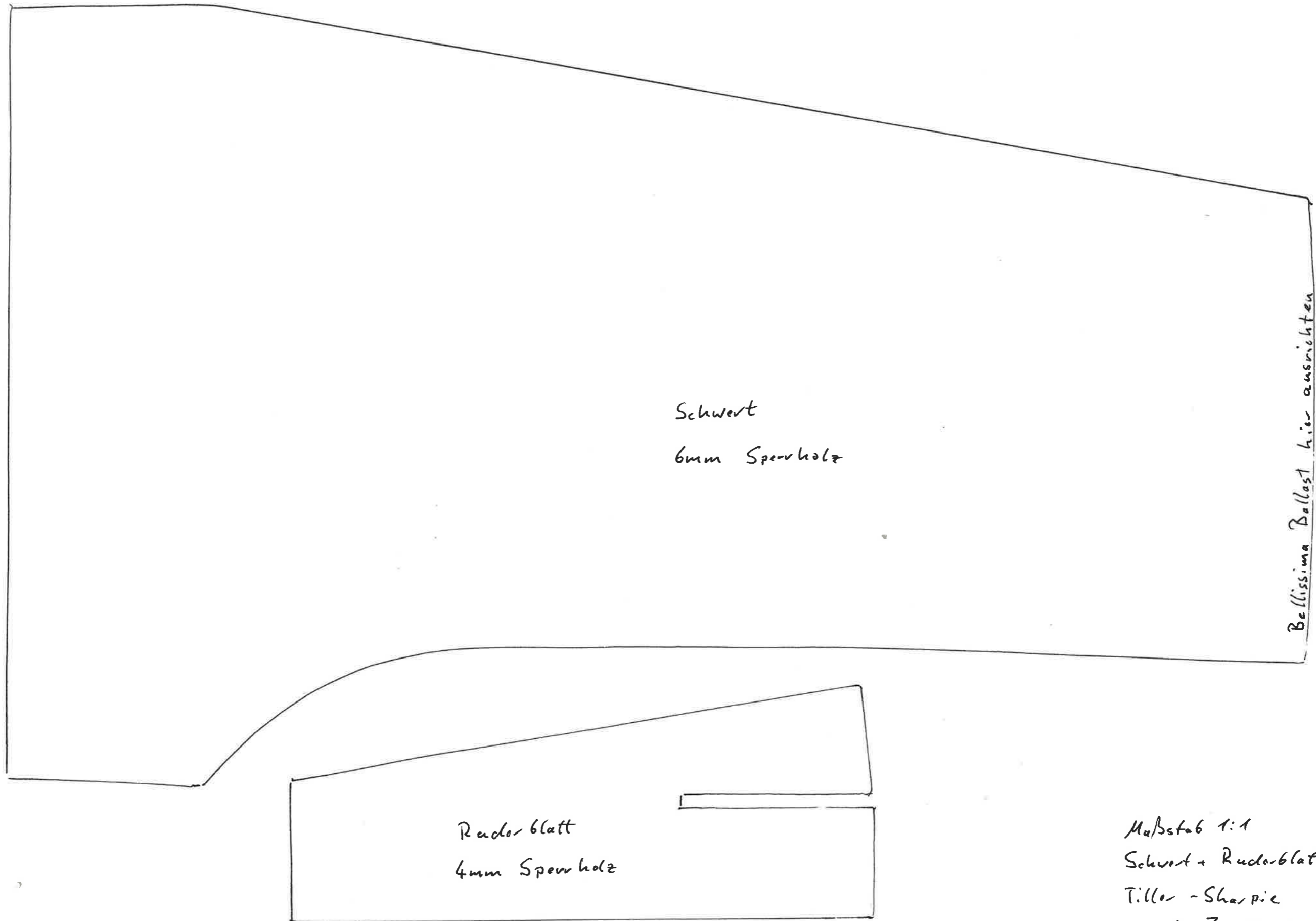
Maßstab 1:1
Spanen 4mm Sperrholz
Tiller - Sharpie
von. K. Bartholomä 2017



4mm Sperrholz
 Maßstab 1:1
 Spanten
 Tiller - Sharpie
 von K. Bartholomä 2017



4mm Sperrholz
 Maßstab 1:1
 Decksunterbau
 Tiller - Sharpie
 von K. Bartholomä 2017

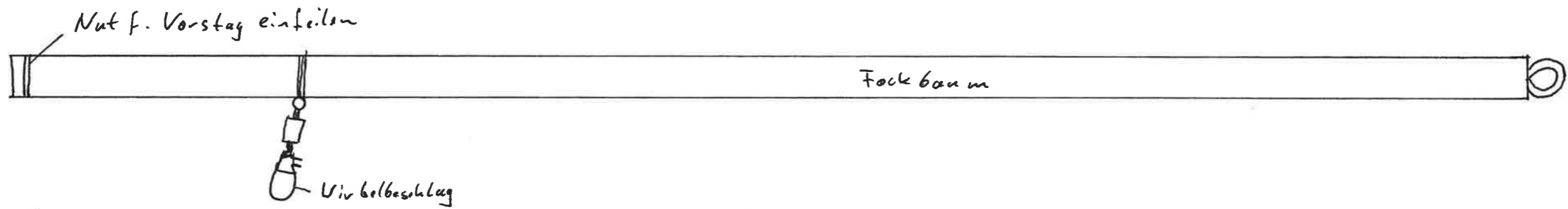
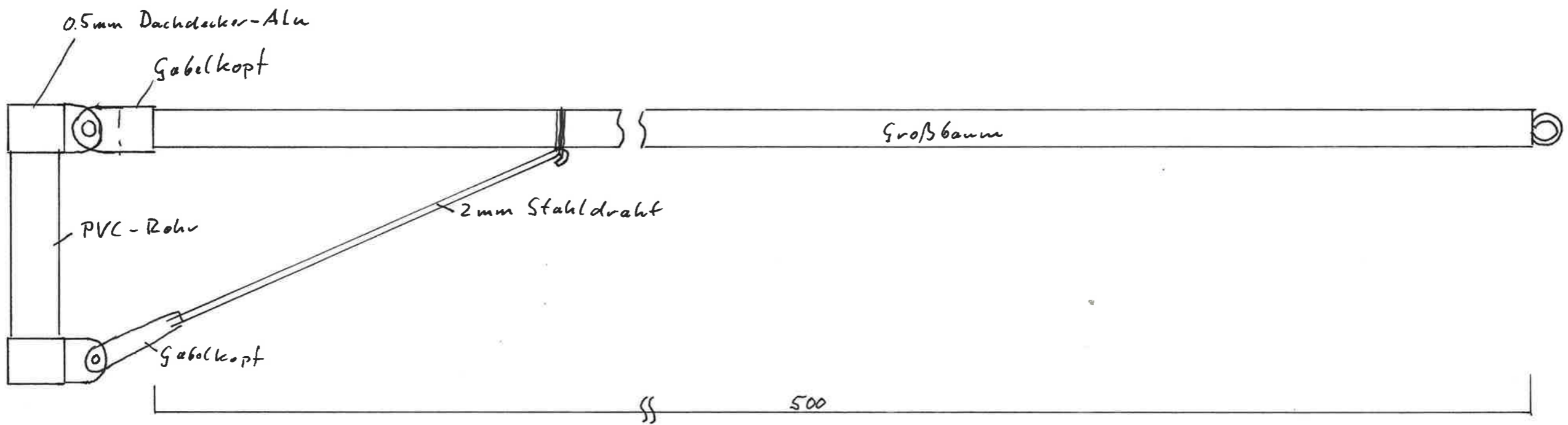
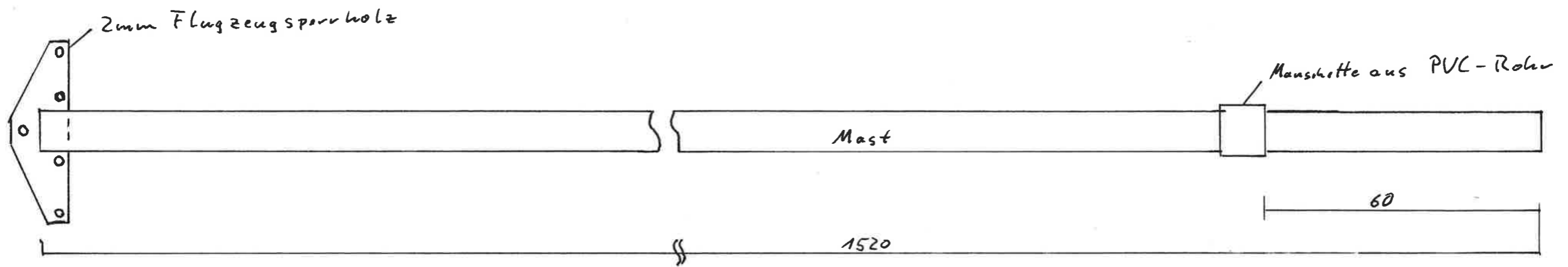


Schwert
6mm Sperrholz

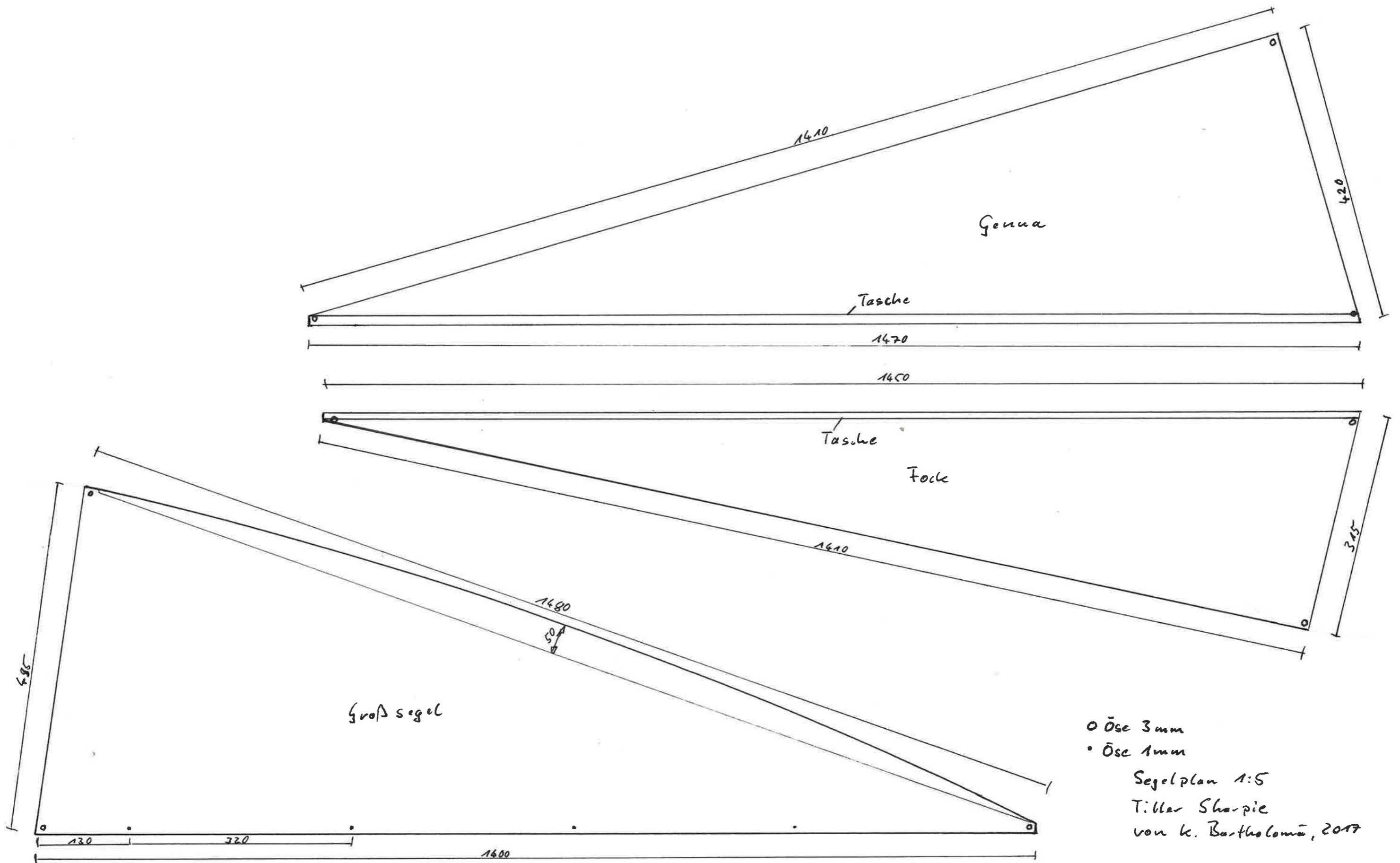
Ruderblatt
4mm Sperrholz

Bellissima Ballast hier ausrichten

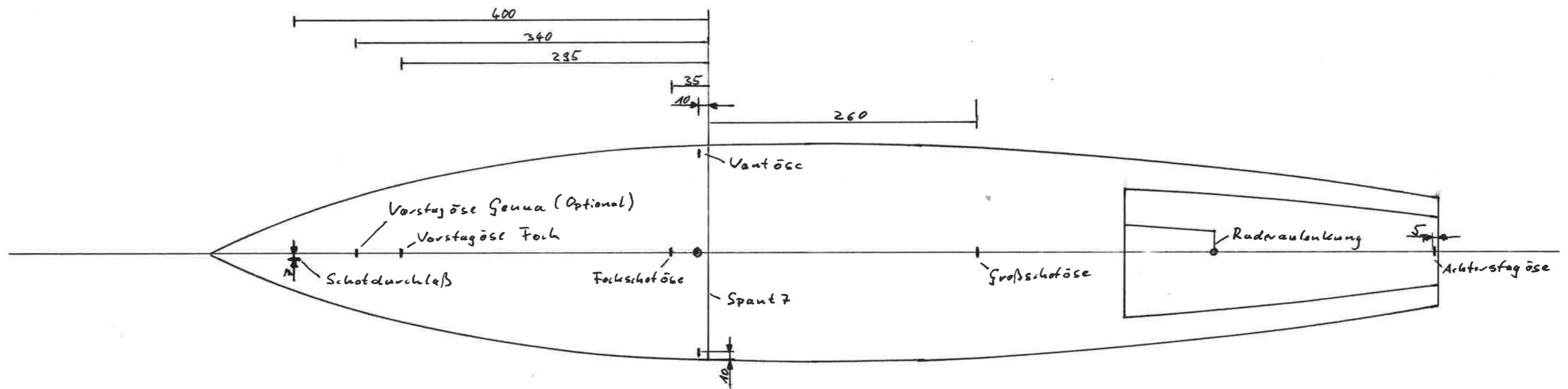
Maßstab 1:1
Schwert + Ruderblatt
Tiller - Sharpie
von K. Bartholomä 2017



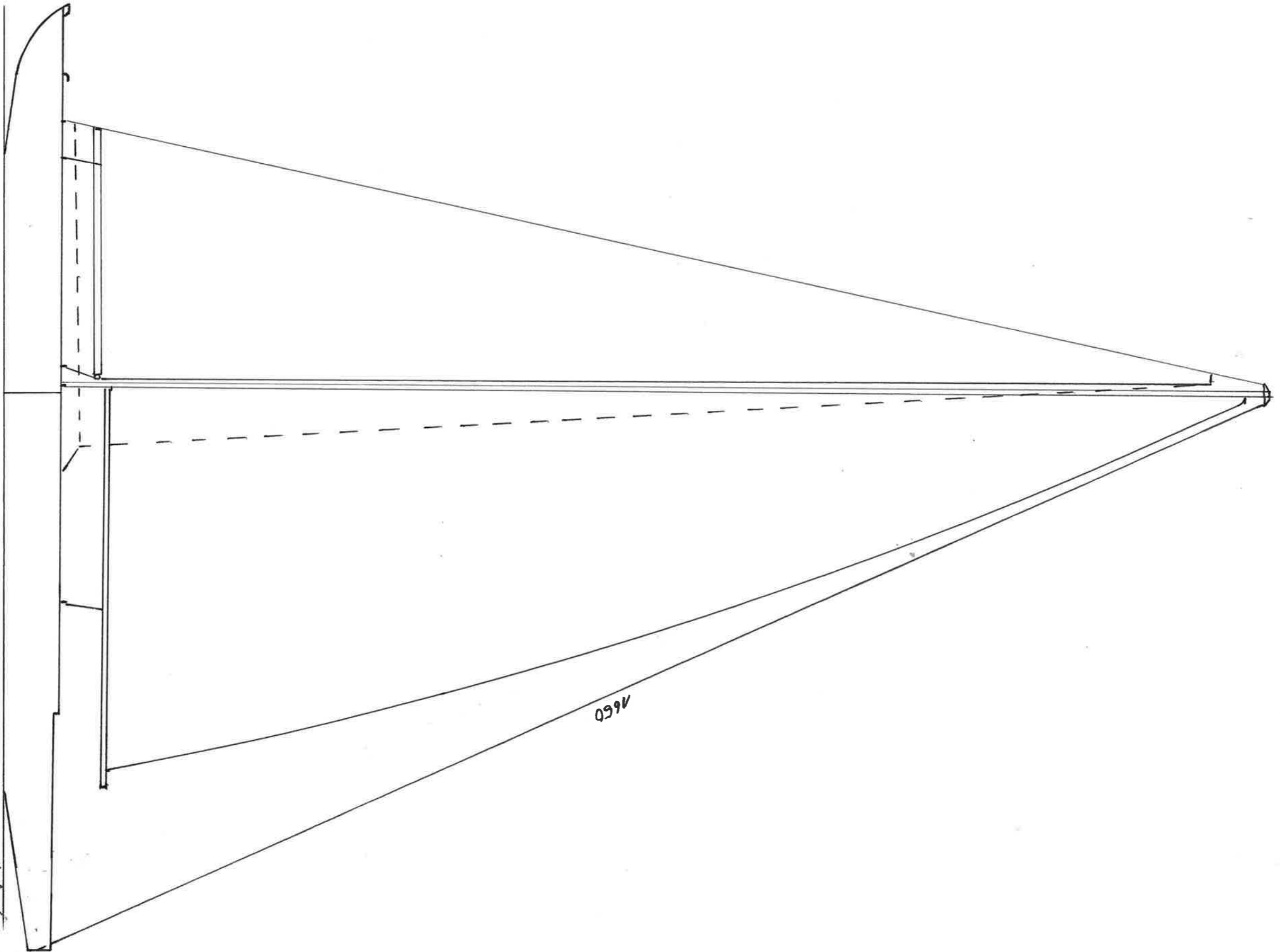
CFK-Rohr $\varnothing 8\text{mm}$
 Maßstab 1:1
 Spieren
 Tiller-Sherpie
 v. k. Bartholomä 2017



• Öse 3mm
 • Öse 1mm
 Segelplan 1:5
 Tiller Sharpie
 von K. Bartholomä, 2017



Maßstab 1:4
 Deckplan
 Tiller - Sharpie
 von K. Bartholomä 2017



11

Maßstab 1:5
 Takelplan
 Tiller Sharpie
 von K. Bartholomä 2017